

CleanBOX Stereo Balanced/Unbalanced Converter

- Converts consumer-level signals to pro, or the reverse!
- Balancing, unbalancing, and gain adjustment in one unit
- Dual channels
- One level control for each channel
- RCA and XLR inputs and outputs



The CleanBOX converts a consumer-level RCA signal to a balanced XLR professional line level. It will also convert balanced pro line level signals to RCA. Great with computer sound cards, semi-pro recording equipment, or just handy to have around as a "Swiss Army Knife" to address interface issues. Dual channels.

Specifications: • Signal to noise ratio: Greater than 90 dB • Input gain: -8 dB balanced and +20 dB unbalanced • Maximum input level: +22 dB balanced and unbalanced • Maximum output level: +18 dB balanced and +12 dB unbalanced • Power requirements: 12V DC (adapter included) • Dimensions: 4.63" x 5.63" x 1.75".

#245-868 \$65.00 LIST **\$49.00** EACH

X-Direct™ Active Direct Box

- For live sound, permanent install, recording, or stage use
- Compact, rugged aluminum case for years of reliable service
- Audiophile-grade low-noise active electronics
- Internal RF interference filter
- Ground lift, pad, and phase reverse switches
- Operates on 18V to 48V phantom power or one 9V battery (included)
- Up to 250 hours of operation with a new 9V battery



#245-873 \$40.00 LIST **\$29.00** EACH

Z-Direct Passive Direct Box

- Compact, rugged aluminum case
- Internal RF interference filter
- Ground lift, pad, and phase reverse switches
- High-performance audio isolation transformer
- Low distortion, wide frequency response
- Passive operation, no batteries required



#245-874 \$30.00 LIST **\$22.95** EACH

Proco AV-1 Audio/Video Interface

The AV-1 Audio/Visual Interface allows the line or speaker level outputs of movie projectors, audio and video tape/cassette recorders, phonographs, etc., to be connected to the microphone inputs of house or portable P.A. systems for programs in school auditoriums, lecture halls, civic meeting, and corporate board rooms. Input: 1/4" (6.3 mm), RCA, and 3.5 mm jacks, as well as a LINE/SPKR switch. Output: 3-pin male balanced XLR connector (uses DBT-1 transformer) and a 1/4" (6.3 mm) unbalanced line-level output. Includes GND/LFT switch to eliminate hum and buzz from AC ground loops. Made in the USA. Five year any excuse, even abuse warranty.



#241-894 \$154.49 LIST **\$98.48** EACH

Proco DB-1 Professional Direct Box

The DB-1 is a super clean sounding, passive direct box that can accept any unbalanced line level input. Includes a Hi Cut/Flat switch that inserts a low pass (-3 dB @ 4 kHz, 6 dB per octave), ground lift switch, 1/4" input jack, 1/4" output jack, and 3 pin XLR low Z output. Input can handle speaker level signals up to 69V RMS (approximately 600W across an 8 ohm load). Made in the USA. Five year any excuse, even abuse warranty.



#241-892 \$127.49 LIST **\$69.94** EACH

Pro Sound

Signal Processing

Ultra-DI DI100 Active Direct Box

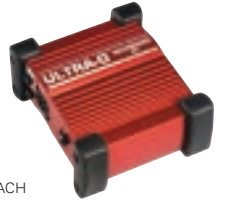
- Direct connection of amplifier outputs with ratings of up to 3,000 watts
- Switchable input attenuation allows input levels of up to +50 dB
- Ground lift switch eliminates typical ground loop problems
- Rugged, road-proof aluminum case
- Stackable oversized rubber corners



#248-730 \$49.99 LIST **\$39.99** EACH

Ultra-G GI100 Active DI Box for Guitar with Speaker Simulation

Engineered for electric guitar, our GI100 features a switchable speaker simulation designed by Juergen Rath that so realistically emulates a 4" x 12" cabinet you may never need to mic your speakers again.



#248-672 \$49.99 LIST **\$34.99** EACH

Ultra-DI DI20 Active 2-Channel Direct Box/Splitter

- Converts 2 separate unbalanced 1/4" TRS line inputs into 2 balanced XLR outputs
- Ultra-flexible: mono, 2-channel or stereo DI box operation with switchable link mode
- Additional split mode (channel 1 assigns the signal to both XLR outputs)
- Phantom or 9V battery powered
- Ground lift switch eliminates typical ground loop problems



#248-732 \$34.99 LIST **\$29.99** EACH

DI800 Ultra-DI PRO 8-Ch Direct Box



The Ultra-DI PRO DI800 is a professional mains/phantom powered 8-channel direct box. It converts unbalanced line inputs into balanced outputs, featuring optional mains or phantom powered operation. Its servo-balanced operation assures ultra-flat frequency response. Additionally, it allows direct connection to speaker outputs with up to 3,000 watts. A ground-lift switch as well as input attenuation/gain per channel round off this powerful device.

#248-662 \$99.99 LIST **\$79.99** EACH

PX1000 Ultrapatch 1/4" TRS Patchbay



The Ultrapatch PX1000 is a professional multi-functional 48-point balanced patchbay. Each channel can be aligned in 5 different modes, giving you the highest possible flexibility. There are fully balanced high-quality 1/4" TRS connectors, and the super-rugged metal construction assures long life and durability.

#248-670 \$34.99 LIST **\$29.99** EACH

Proco CB-1 Direct Box

This passive direct box accepts signals from guitars, keyboards, drum machines, preamp outputs of amplifiers, etc. and allows direct connection to a mixer that uses balanced low Z inputs. Includes a ground lift switch, 1/4" input jack, 1/4" output jack, and 3 pin XLR low Z output. Made in the USA. Five year any excuse, even abuse warranty.



#241-890 \$74.49 LIST **\$39.94** EACH