

Car Audio

Installation Accessories

12 VDC 40A Relay

- Bosch type 12V, 30/40A relay
- SPDT
- Plastic housing with mounting tab

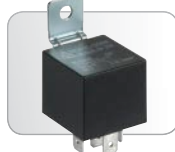
#330-073 . . . \$1.69 (1-9) \$1.43 (10-99) \$1.21 (100-UP)



12 VDC 40A Sealed Relay

12V, 30/40A Bosch-type relay popular for use in car audio and security installations. SPDT. Features a sealed plastic housing for applications requiring water resistance, and a metal mounting tab.

#330-079 . . . \$2.89 (1-9) \$2.55 (10-99) \$2.29 (100-UP)



Tyco 12 VDC 30A Relay

- 12V, 20/30A relay
- SPDT
- Plastic housing with mounting tab

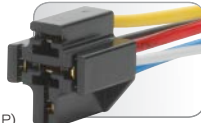
#330-070 . . . \$3.19 (1-9) \$3.00 (10-99) \$2.65 (100-UP)



Relay Socket

- Prewired 5-pin relay socket
- For use with Bosch type 12V relays
- Three 14 AWG and two 18 AWG 12" wires

#330-075 . . . \$1.75 (1-9) \$1.50 (10-99) \$1.29 (100-UP)

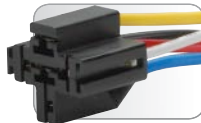


Interlocking Relay Socket

- Prewired 5-pin relay socket
- Interlocking sides allow you to easily gang multiple sockets together
- For use with Bosch type 12V relays
- Three 14 AWG and two 18 AWG 12" wires

NEW

#330-080 . . . \$1.79 (1-9) \$1.50 (10-49) \$1.29 (50-UP)



Dual Relay Socket

- 12" leads
- Pre-wired dual 5 pin relay sockets
- For use with Bosch type relays

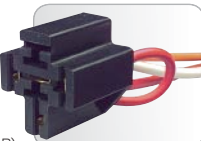
#330-078 . . . \$4.90 (1-9) \$4.59 (10-99) \$4.25 (100-UP)



Relay Socket with Diode

- 12" leads
- Pre-wired 5 pin relay socket with diode across the coil
- For use with Bosch type relays

#330-076 . . . \$2.60 (1-9) \$2.29 (10-99) \$1.82 (100-UP)



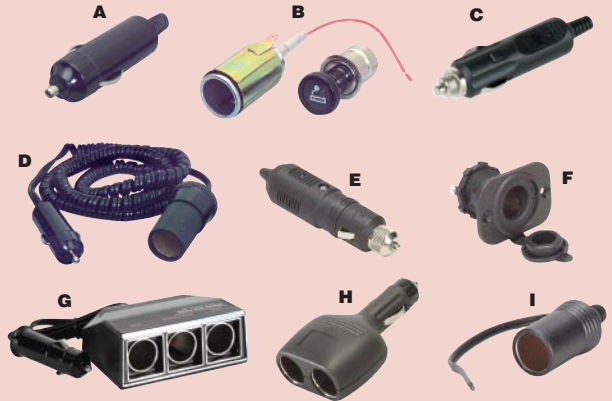
Split Loom Tubing

Helps dress up any custom installation. Split loom design allows entry and exit of wire at any location. Please order in multiples of 10 ft. Made in Canada.



Part #	Description	Price (10-40 Ft.)	Price (50 Ft.-UP)
080-523	1/4" black	.18	.12
080-525	1/2" black	.22	.16
080-526	3/4" black	.34	.26
080-527	1" black	.39	.35

Cigarette Lighter Plugs and Accessories



Part #	Fig.	Description	Price (1-9)	Price (10-UP)
090-450	A	Cigarette lighter plug, perfect for replacing damaged plugs	\$1.19	\$1.09
265-239	B	Cigarette lighter & jack assembly, complete replacement lighter assembly	3.50	2.90
265-562	C	Cigarette lighter plug, with LED indicator	2.25	1.85
265-235	D	Cigarette lighter extension, coiled cord extends to over 6 ft.	3.95	3.75
265-272	E	Marine grade locking lighter plug, corrosion resistant, moisture proof	4.95	4.25
265-274	F	Marine grade locking lighter receptacle, with cover	6.78	5.82
265-564	G	Cigarette lighter triple socket adapter, connects 3 accessories to 1 lighter jack	7.87	6.52
265-566	H	Cigarette lighter dual socket adapter, connects 2 accessories to 1 lighter jack	4.45	3.79
265-570	I	Cigarette lighter socket with 6" wire leads. Molded strain relief.	2.39	1.95

Marinco Sealink™ Deluxe 12V Receptacle and Plug



Exclusive Sealink inter-connecting system securely locks the plugs into the receptacle resulting in a positive and moisture proof connection. Marinco has a 5 year warranty and products are made in the USA. 15 amp current rating.



Part #	Description	Price (1-9)	Price (10-19)	Price (20-UP)
265-236	Receptacle	\$14.93	\$14.39	\$12.63
265-238	Plug	8.84	8.57	7.63

Heavy Duty Barrier Strips



Double-row barrier strips are made with heavy duty thermo-plastic. 20 amp current rating.

Part #	Description	Price (1-9)	Price (10-UP)
090-842	3 row, 2"	\$2.05	\$1.84
090-844	5 row, 3-3/4"	2.65	2.40
090-850	10 row, 6-1/2"	4.90	4.50