

Pro Audio

Speakers, Drivers & Horns



See page 218-224 for our selection of compatible horn drivers.

Goldwood High Frequency Horns

These molded horns are constructed of high-impact ABS and feature the standard 1-3/8"-18 TPI screw-on driver mounting threads. Some models feature a metal thread insert for added durability.



#270-092



#260-090



#270-095



#270-096

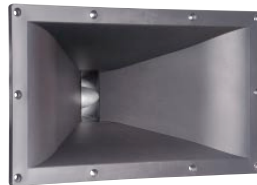


#270-099

Part #	Width	Dimensions Height	Depth	Width	Hole Cutout Height	Metal Threads	Price (1-3)	Price (4-19)	Price (20-UP)
270-092	7-11/16"	6-1/8"	4-3/8"	6-1/4"	4-5/8"	No	\$5.52	\$4.95	\$4.10
270-095	10-7/16"	4-7/8"	6-3/4"	9-1/4"	3-1/4"	No	7.44	6.90	6.49
270-096	12"	4-1/2"	5"	10-3/4"	3-1/4"	No	7.32	6.78	6.38
260-090	13-7/8"	6-15/16"	7-15/16"	12-3/4"	5-5/8"	Yes	17.69	15.93	13.88
270-099	15-3/16"	5-1/8"	6"	13-5/8"	3-3/4"	Yes	13.90	12.11	9.66

Goldwood GM-450PB 2" High Frequency Horn

- Large format horn for 2" compression drivers
- 90° H x 40° V dispersion
- Heavy-duty reinforced ABS construction
- Useable to 500 Hz



Excellent pattern control and directivity down to the lower frequency limit of 500 Hz. The 3/8" thick ABS construction with reinforcing ribs supports the heaviest of 2" exit compression drivers with ease.

Specifications: • Throat diameter: 2" • Bolt pattern: four holes on 4" diameter circle • Nominal coverage: 90° W x 40° V • Cutoff frequency: 500 Hz • Horn dimensions: 17.7" W x 9.8" H x 9.1" D • Cutout dimensions: 15-3/4" W x 8" H.

#270-204 \$69.95 LIST **\$49.25** (1-3) **\$45.31** (4-UP)

Pyle Pro PH612 1" High Frequency Horn

- Provides consistent, even coverage
- 90° horizontal dispersion
- Threaded metal throat insert
- ABS resin construction
- Standard 1-3/8"-18 TPI screw-on driver mounting



Pyle Pro's PH612 horn is made of a durable ABS resin, and provides superb high frequency coverage for PA speakers, stage wedges, and studio monitors.

Specifications: • Throat diameter: 1" • Driver mounting: 1-3/8"-18 TPI • Nominal coverage: 90° H x 40° V • Cutoff frequency: 1,000 Hz • Dimensions: 6.4" H x 11.9" W x 4.4" D.

#292-2572 \$24.99 LIST **\$12.95** (1-3) **\$10.20** (4-UP)

Dayton Audio H110 High Frequency Horn

- Symmetrical horn mouth rotates easily for multi-position cabinet designs
- Glass-reinforced polycarbonate construction
- Threaded brass 1-3/8" x 18 TPI throat for screw-on drivers
- 90° H x 40° V coverage



The medium-format constant directivity H110 is intended for large PA cabinets, and its symmetrical mouth permits easy rotation when used in multi-application enclosures.

Specifications: • Nominal coverage: 90° H x 40° V • Cutoff frequency: 700 Hz • Dimensions: 11-1/2" H x 11-1/2" W x 9-5/8" D.

#270-300 \$38.99 LIST **\$29.58** (1-3) **\$28.18** (4-UP)

Dayton Audio H812 1" High Frequency Horn

- Exponential flare for improved throw and better on-axis HF response
- Glass-reinforced polycarbonate construction
- Mounting flange for 2-bolt 1" drivers
- 100° H x 60° V coverage



Dayton Audio's H812 horn employs a traditional exponential flare that provides improved throw and better HF response, but with narrowing dispersion at the highest frequencies.

Specifications: • Nominal coverage: 100° H x 60° V • Cutoff frequency: 700 Hz • Dimensions: 7-7/8" H x 12-1/2" W x 8-1/8" D.

#270-304 \$25.99 LIST **\$19.95** (1-3) **\$18.13** (4-UP)

Dayton Audio High Frequency Waveguides

Dayton Audio waveguides reveal all of the articulate, accurate sound reproduction that your HF drivers are capable of delivering, whether the application is live sound, critical studio monitoring, or demanding home audio playback. Two versions are available, round or elliptical. Both are precision molded from high-performance plastic, and have industry-standard 1-3/8" x 18 TPI throats for screw-on style drivers.



#270-308

#270-310

#270-312

#270-314

#270-316

Part#	Mfg. #	Shape	Lowest Rec. Xover Freq.	Nominal Coverage	Dimensions (H x W x D)	List Price	Price (1-3)	Price (4-UP)
270-308	H08RW	Round	2,200 Hz	75° conical	8" round x 4-3/4" D	\$12.99	\$9.68	\$8.80
270-310	H10RW	Round	1,600 Hz	75° conical	10" round x 5" D	14.99	11.51	10.47
270-312	H12RW	Round	1,200 Hz	75° conical	11-1/2" round x 5-1/4" D	17.99	13.90	12.80
270-314	H45E	Elliptical	3,500 Hz	80° H x 50° V	4-11/16" x 4-5/8" x 3-1/8"	9.99	6.35	5.75
270-316	H07E	Elliptical	2,200 Hz	80° H x 50° V	5-7/8" x 5-7/8"	10.99	7.99	7.27