

Pro Audio

Speakers, Drivers & Horns



JBL 2426H 1" Titanium Horn Driver

The 2426H is a professional high frequency compression driver that incorporates JBL's pure titanium diamond diaphragm for ruggedness and outstanding frequency response. Features an edgewound aluminum ribbon voice coil, 1" exit and standard 3-bolt mounting.

Specifications: • Power handling: 70 watts above 800 Hz, 100 watts above 1.2 kHz • VC_{DIA}: 1-3/4" • Frequency range: 500-20,000 Hz • Sensitivity: 110 dB 1W/1m • Dimensions: 5.875" dia. x 4.125" depth • Net weight: 9.5 lbs.



#294-410 \$419.00 LIST **\$283.46** EACH

JBL 2446H 2" Titanium Horn Driver

JBL's 2446H is a professional large format compression driver using the newly-developed Coherent Wave™ phasing plug design, high temperature voice coil for extended high power handling capacity, and 4" pure titanium diaphragm. Standard 4-hole mounting pattern, 2" exit.

Specifications: • Power handling: 100 watts continuous above 500 Hz, 150 watts continuous above 1 kHz • VC_{DIA}: 4" • Frequency range: 500-20,000 Hz • Sensitivity: 111 dB • Dimensions: 9-1/4" dia. x 5-1/4" depth • Net weight: 30-1/2 lbs.



#294-415 \$799.00 LIST **\$526.12** EACH

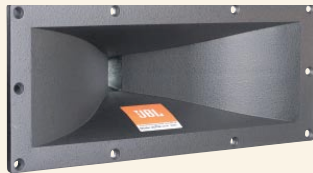
JBL High Frequency Horns

- Designed for flush cabinet mounting or compact cluster applications
- Uniform on-and-off-axis frequency response

- Precise horizontal and vertical pattern control
- Axial sensitivities measured at 1W/1m with JBL 2446H driver
- Made of high-density, molded structural foam

JBL 2370A Bi-Radial® 1" Horn

Specifications • 90° x 40° dispersion • Standard 3-bolt mounting • Full horn loading to 630 Hz • 1" throat entry • Axial pressure sensitivity: 110 dB • Dimensions: 6-7/8" H x 17-1/2" W x 6-7/8" D.



#294-420 \$239.00 LIST **\$161.67** EACH

JBL 2382A Bi-Radial® 2" Horn

Specifications • 120° x 40° dispersion • Standard 4-bolt mounting • Full horn loading to 500 Hz • 2" throat entry • Axial pressure sensitivity: 110 dB • Dimensions: 11" H x 17-1/2" W x 9-1/4" D.



#294-425 \$389.00 LIST **\$263.15** EACH

JBL 2380A Bi-Radial® 2" Horn

Specifications • 90° x 40° dispersion • Standard 4-bolt mounting • Full hornloading to 500 Hz • 2" throat entry • Axial pressure sensitivity: 112 dB • Dimensions: 11" H x 17-1/2" W x 9-1/4" D.

NEW



#294-424 \$309.00 LIST **\$209.00** EACH

JBL 2385A Bi-Radial® 2" Horn

Specifications: • 60° x 40° dispersion • Standard 4-bolt mounting • Full horn loading to 500 Hz • 2" throat entry • Axial pressure sensitivity: 114 dB • Dimensions: 11" H x 17-1/2" W x 9-1/4" D.

NEW



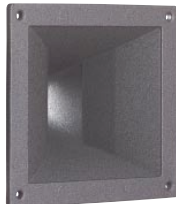
#294-426 \$309.00 LIST **\$209.00** EACH

B&C High Frequency Horns

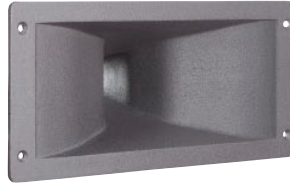
B&C Speakers produces a series of horns for compression drivers ranging from constant directivity models— known for their great consistency in angular coverage—to exponential models, which optimize acoustical loading and sound energy transfer. Standardized driver mounting flanges give the designer the freedom to choose the best horn/driver combination for each project.



#294-618



#294-620



#294-622



#294-624



#294-626

Part #	Mfg. #	Horn Type	Min Freq	Nominal Dispersion	Throat Dia.	Mounting Type	Dimensions (W x H x D)	Price (1-3)	Price (4-UP)
294-618	ME10	Hyperbolic Cosine ABS	1.5 kHz	90° H x 60° V	1"	2 bolt	5.1" x 5.1" x 3.5"	\$14.11	\$13.40
294-620	ME15	Exponential Cast Aluminum	1.5 kHz	90° H x 60° V	1"	2 bolt	5.4" x 5.9" x 3.5"	28.75	27.31
294-622	ME45	Exponential Cast Aluminum	1 kHz	90° H x 40° V	1"	2 bolt	5.6" x 12.2" x 4.9"	47.78	45.39
294-624	ME60	Constant Directivity Cast Aluminum	800 Hz	90° H x 40° V	2"	4 bolt	9.3" x 10.6" x 7.9"	88.87	84.42
294-626	ME90	Constant Directivity Cast Aluminum	900 Hz	80° H x 60° V	1.4"	4 bolt	10.6" x 10.6" x 5.5"	77.37	73.50