

Pro Audio

Speakers, Drivers & Horns

Goldwood Professional Horn Drivers



- Titanium diaphragm
- 2" voice coil
- Available in 8 or 16 ohms
- Replacement diaphragms available



Specifications: • Power handling: 100 watts RMS
 • VC_{DIA}: 2" • Impedance: 8 or 16 ohms • Frequency range: 1,200-16,000 Hz • Magnet weight: 35 oz.
 • Sensitivity: 105 dB • Dimensions: Diameter: 5-1/2", Depth: 2".

Part #	Mfg. #	Description	Price (1-3)	Price (4-UP)
270-186	GM-550CD	Screw-on, 8 ohm	\$37.97	\$33.82
270-188	GM-550CD	Screw-on, 16 ohm	37.97	33.82
270-190	GM-560CD	Bolt-on, 8 ohm	37.97	33.82
270-192	GM-560CD	Bolt-on, 16 ohm	37.97	33.82
270-193	GM-550/560CD	8 ohm replacement diaphragm	17.73	14.72
270-194	GM-550/560CD	16 ohm replacement diaphragm	17.73	14.72

Pro Series Compression Driver

Specifications: • Power handling: 80 watts RMS
 • Frequency response: 600-11,000 Hz • Sensitivity: 99 dB • 8 ohm impedance • 20 oz. magnet • Standard 1-3/8"-18 TPI • Mfg. #GW-500CD • Dimensions: Diameter: 4-5/16"; Depth: 2-1/2".



#260-097 \$12.89 (1-9) \$11.59 (10-49) \$10.23 (50-UP)

Mid/Tweeter Piezo Horn Driver

Specifications: • Built in transformer circuit for increased output and power handling • Power handling: 60 watts RMS/120 watts max • Frequency response: 1,500-20,000 Hz • SPL: 102 dB 2.83V/1m • Mounts to any 1-3/8"-18 TPI horn • Mfg. #GT-1188 • Dimensions: Diameter: 4", Depth: 2-1/2".



#270-082 \$8.50 (1-9) \$7.85 (10-49) \$6.90 (50-UP)

3-1/4" Piezo Tweeter

Specifications: • Power handling: 50 watts RMS/75 watts max • Frequency response: 3,500-27,000 Hz • SPL: 94 dB • Mfg. #GT-1005 • Dimensions: A: 3-1/4", B: 3-1/4", C: 2-1/2".



#270-011 .. \$2.25 (1-9) \$1.97 (10-49) \$1.89 (50-UP)

2" x 5" Piezo Horn

Specifications: • Power handling: 50 watts RMS/75 watts max • Frequency response: 3,500-27,000 Hz • SPL: 94 dB • Mfg. #GT-1016 • Dimensions: A: 5-3/4", B: 2-3/4", C: 2".



#270-041 \$2.25 (1-9) \$1.97 (10-49) \$1.89 (50-UP)

Piezo Horn Mid/Tweeter

Specifications: • Power handling: 60 watts RMS/75 watts max • Frequency response: 1,800-30,000 Hz • SPL: 90 dB • Mfg. #GT-1025 • Dimensions: A: 7-1/4", B: 3-1/10", C: 4".



#280-062 \$2.59 (1-9) \$2.21 (10-49) \$2.01 (50-UP)

Bullet Piezo Horn Driver

Specifications: • Power handling: 100 watts RMS • Frequency response: 1,800-30,000 Hz • SPL: 92 dB 1W/1m • Mounts to any 1-3/8"-18 TPI horn • Mfg. #GT-400CD • Dimensions: diameter: 2-7/16", depth: 1-1/2".



#270-069 \$3.50 (1-9) \$3.13 (10-49) \$2.48 (50-UP)

Eminence APT-50 Super Tweeter

The APT high-power super tweeter possesses extraordinary sensitivity thanks to a phenolic diaphragm, which has unique properties of stiffness and damping. Available as a stand-alone unit to mount on your favorite horn (with optional APT3 super tweeter to 1-3/8"-18 screw-thread horn adapter), or pre-mounted on one of three Eminence horns.



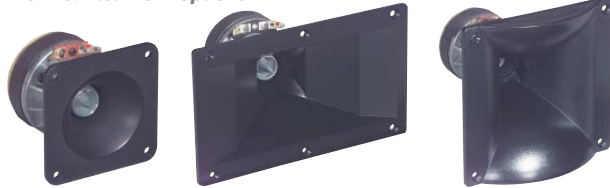
Specifications: • Power handling: 45 watts RMS (crossover frequency 3.5 kHz, 18 dB/octave), 85 watts RMS (crossover frequency 5 kHz, 18 dB/octave) • Impedance: 8 ohms • Useable range: 3,500-20,000 Hz • Fs: 2,500 Hz • Recommended crossover: 3,500 Hz • Sensitivity: 105 dB • Depth: 1.57".

#290-530 (APT-50 tweeter) \$29.99 LIST \$28.97 EACH

#290-531 (APT-3 screw thread adapter) \$4.99 LIST \$4.47 EACH

#290-539 (APTD25D replacement diaphragm) \$6.49 LIST \$5.97 EACH

Pre-Mounted Horn Options



Part #	Mfg. #	Dimensions (W x H x D)	Dispersion	List Price	Price Each
290-532	APT-80	3.4" x 3.4" x 2.9"	80° conical	\$34.99	\$29.97
290-534	APT-150	7.5" x 4.5" x 2.9"	100° H x 50° V	44.99	39.97
290-536	APT-200	5.9" x 5.9" x 5.94"	90° H x 90° V	59.99	57.97

Eminence ASD1001S 1" Titanium Horn Driver



- 1" exit HF screw-on driver, 1-3/8"-18 TPI
- Aluminum former with titanium diaphragm
- Recommended crossover: 2.5 kHz, 18 dB/octave



Eminence has answered your call for a really affordable 1" throat compression driver with the ASD1001S!

Specifications: • Power handling: 50 watts RMS (EIA426B specification, 2.5 kHz @ 18 dB) • Impedance: 8 ohms • Frequency range: 2,500-19,000 Hz • Sensitivity: 103 dB 2.83V/1m • Dimensions: 3.5" dia. x 2.42" depth.

#290-525 \$29.99 LIST \$26.97 EACH

Constant Directivity Horn Tweeter

Super quality, constant directivity horn tweeter with 90° dispersion angle and heavy-duty magnet structure. Excellent crisp, clear reproduction of high frequencies.



Specifications: • Power handling: 30 watts RMS/60 watts max • Impedance: 8 ohms • Frequency response: 1,500-20,000 Hz • Magnet weight: 10 oz. • Fs: 950 Hz • SPL: 95 dB 1W/1m • Dimensions: A: 3-1/2" x 3-1/2", B: 2-1/2" x 2-1/8", C: 2-1/2".

#270-049 \$9.25 (1-3) \$8.50 (4-UP)

4" x 10" Horn Midrange

Specifications: • Power handling: 35 watts RMS/50 watts • Superior quality diecast aluminum lens. • Impedance: 8 ohm • Frequency response: 500-11,000 Hz • Sensitivity: 104 dB 1W/1m • Fs: 500 Hz • Magnet weight: 10 oz. • Recommended crossover frequency: 800 Hz • Dimensions: 3-1/4" H x 9-1/2" W x 7-1/2" D.



#280-050 \$19.60 (1-3) \$18.24 (4-UP)