

Speaker Building

Cabinet Hardware & Accessories

Precision Port™ Flared Port Tube Kits

The unique flared-end construction of the Precision Port™ system enables it to outperform any standard port tube on the market. The flared design reduces air turbulence, which lessens wind noise and helps maintain clean bass output. With the Precision Port™ system you can get maximum output before port noise becomes an issue. Now you can experience good looks, low distortion, and superior overall sound quality thanks to the Precision Port™ system. Available in 2", 3", 4", and 6" diameters; the 2" kit will make up to an 11" port, the 3", 4", and 6" kits can make a port up to 17" long. Installation instructions included.



Part #	Inside Diameter	Price (1-3)	Price (4-UP)
268-348	2"	\$9.65	\$8.80
268-350	3"	13.30	12.25
268-352	4"	13.90	12.50
268-354	6"	37.96	33.33

Port Tubes

Give your cabinets a professional appearance with these attractive, black plastic port tubes. By tuning a speaker with the proper length port, it is possible to achieve greater low frequency extension.



Part #	Inside Diameter	Length	Special Features	Price (1-9)	Price (10-UP)
260-402	1-1/2"	4"	Flared	\$1.40	\$1.25
260-406	1-3/4"	2-1/4"		.90	.75
260-407	1-3/4"	4"		1.38	1.19
260-322	2-1/16"	5"	Stepped lip	1.20	1.00
260-408	2-3/4"	2-3/4"		1.48	1.27
260-409	2-3/4"	4-3/4"		2.09	1.75
260-410	2-3/4"	5-1/4"	Screened	1.58	1.31
260-323	2-3/4"	1"		1.12	.93
260-404	3"	4-1/2"		2.09	1.75
260-403	4"	4"	Flared	2.49	2.19
260-411	4"	4-3/8"		2.68	2.21
260-401	6"	6"		3.40	2.90

Triangular Port Tube

Triangular black plastic port tube is perfect for fine tuning bass alignment. Long side of triangle is curved so it can be mounted around the driver. Dimensions: 6" W x 2-3/4" H x 5" D.

#260-713 \$2.75 (1-9) \$2.50 (10-UP)



Flared Port Tubes

These high-quality port tubes feature a large external flare for reduced port turbulence and enhanced aesthetic appeal. The extra-long lengths are perfect for tuning small high-performance bookshelf or standmount speakers. Ports are a press-fit style and can be trimmed to length if needed.

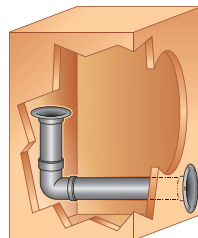


#260-470 #260-472 #260-474 #260-476 #260-478 #260-480

Part #	Inside Diameter	Length	Price (1-3)	Price (4-UP)
260-470	1"	4"	\$1.25	\$1.12
260-472	1-1/8"	6-1/2"	2.43	2.19
260-474	1-5/8"	4-7/8"	2.43	2.19
260-476	1-7/8"	5-5/8"	2.57	2.31
260-478	2-1/2"	8-1/2"	2.85	2.57
260-480	3-3/4"	7-5/8"	4.25	3.86

Dayton Audio Create-Your-Own Flared Port Tube System

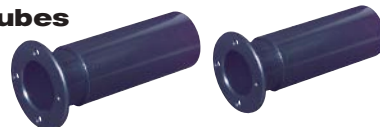
Ports are an integral part of any loudspeaker system, so why skimp where it counts? Dayton Audio has developed the first a la carte port tube system that allows you to buy the parts you need to get the tuning you want. A selection of flares, elbows, and straight tubes allows you to create a port that will fit in any cabinet. Constructed from very high quality ABS plastic, the aesthetics of these ports is heads-and-shoulders above similar products.



Part #	Model #	Dia.	Description	Price (1-3)	Price (4-UP)
268-320	PT3-OF	3"	Outside flare w/mounting holes	\$6.94	\$6.61
268-322	PT3-IF	3"	Inside flare	4.94	4.70
268-324	PT3-MFE	3"	Male-to-female elbow	9.53	9.07
268-326	PT3-CR	3"	Coupler ring	2.10	2.00
268-328	PT3-ST	3"	15-3/4" straight tube	11.15	10.62
268-330	PT4-OF	4"	Outside flare w/mounting holes	8.32	7.92
268-332	PT4-IF	4"	Inside flare	5.39	5.13
268-334	PT4-MFE	4"	Male-to-female elbow	12.83	12.22
268-336	PT4-CR	4"	Coupler ring	2.22	2.12
268-338	PT4-ST	4"	15-3/4" straight tube	12.49	11.89

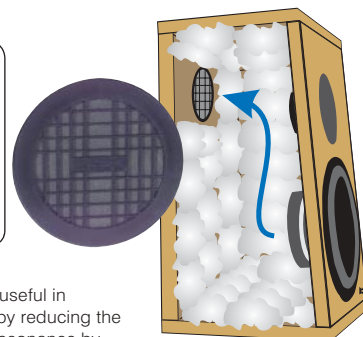
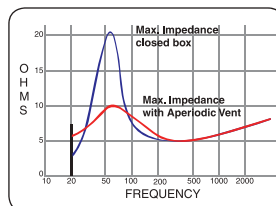
Adjustable Port Tubes

Perfect for fine tuning bass alignment. Made of impact resistant black plastic.



Part #	Inside Diameter	Adjustable Length	Price (1-9)	Price (10-UP)
260-388	1-3/8"	4-5/16" to 8-5/8"	\$2.15	\$1.72
260-387	2"	6" to 11"	2.62	2.08
260-386	2-1/2"	5" to 9-1/2"	3.18	2.57
260-329	4-5/16"	6-1/4" to 11-3/4"	6.10	5.10

Aperiodic Vent



The Aperiodic Vent is an air flow resistant, dampening device very useful in sealed box applications. It works by reducing the maximum impedance at the box resonance by at least 50%. This results in clearer, better defined bass, with more amplifier power and control into the lower frequencies. It also allows the use of a driver in a smaller than optimum sealed enclosure. The vent should be mounted to the cabinet back wall in a 4-5/16" (110 mm) diameter hole. About 60% of the cabinet volume should be filled with dampening material, being careful to leave an open path from woofer rear to the vent device. For enclosure volumes up to 1.75 cu. ft., one vent is required. Up to 2.75 cu. ft., two are needed, and for volumes of more than 2.75 cu. ft., three vents are required.

#296-546 \$9.90 (1-3) \$9.48 (4-UP)