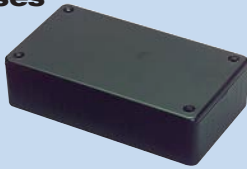




ABS General Purpose Cases

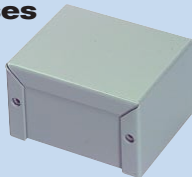
Made of ABS with two-piece lap construction to protect against dust and splashing water. Countersunk lid is secured with self tapping slotted screws (included). Ideal for use as an electronic instrument enclosure, with slots for mounting printed circuit boards. Black in color. Made in Canada.



| Part # | Mfg. # | Dimensions (L x W x H) | Price (1-9) | Price (10-UP) |
|---------|----------|------------------------|-------------|---------------|
| 320-700 | 1591LSBK | 3.3" x 2.2" x 1.6" | \$4.15 | \$3.43 |
| 320-702 | 1591ASBK | 3.9" x 2.0" x 1.0" | 3.86 | 3.13 |
| 320-704 | 1591SSBK | 4.3" x 3.2" x 1.7" | 5.33 | 4.56 |
| 320-706 | 1591BSBK | 4.4" x 2.4" x 1.2" | 4.23 | 3.57 |
| 320-708 | 1591CSBK | 4.7" x 2.6" x 1.6" | 4.34 | 3.65 |
| 320-710 | 1591TSBK | 4.7" x 3.2" x 2.3" | 6.16 | 5.09 |
| 320-712 | 1591GSBK | 4.8" x 3.7" x 1.3" | 5.11 | 4.22 |
| 320-714 | 1591DSBK | 5.9" x 3.1" x 2.0" | 6.53 | 5.34 |
| 320-716 | 1591HSBK | 6.5" x 2.8" x 1.2" | 5.04 | 4.20 |
| 320-718 | 1591ESBK | 7.5" x 4.4" x 2.4" | 7.46 | 6.39 |

2-Piece Aluminum Utility Cases

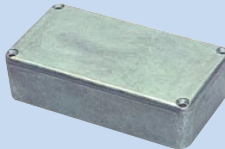
Made of .040" thick aluminum, these utility cases are ideal for a variety of electronic projects including power supplies, amplifiers, test equipment, switch boxes, etc. Features a gray, baked enamel finish. Made in Canada.



| Part # | Mfg. # | Dimensions (L x W x H) | Price (1-9) | Price (10-UP) |
|---------|--------|------------------------|-------------|---------------|
| 320-776 | 1411L | 5.0" x 4.0" x 3.0" | \$9.88 | \$8.35 |
| 320-778 | 1411P | 6.0" x 5.0" x 4.0" | 13.53 | 11.05 |
| 320-780 | 1411Q | 7.0" x 5.0" x 3.0" | 13.99 | 11.80 |
| 320-784 | 1411X | 12.0" x 7.0" x 4.0" | 30.94 | 27.96 |

Die-Cast Aluminum Cases

These rugged electronic instrument cases are made with diecast aluminum alloy for superb durability. Provides improved EMI/RFI shielding. Screws (included) secure countersunk lid in pre-tapped holes. Finish is unpainted aluminum alloy. Silver in color. Made in Canada.



| Part # | Mfg. # | Dimensions (L x W x H) | Price (1-9) | Price (10-UP) |
|---------|--------|------------------------|-------------|---------------|
| 320-740 | 1590LB | 2.0" x 2.0" x 1.2" | \$7.09 | \$5.56 |
| 320-742 | 1590A | 3.6" x 1.5" x 1.25" | 7.65 | 6.53 |
| 320-744 | 1590B | 4.4" x 2.4" x 1.25" | 8.06 | 7.04 |
| 320-746 | 1590BB | 4.7" x 3.7" x 1.34" | 10.00 | 8.67 |
| 320-748 | 1590C | 4.7" x 3.7" x 2.2" | 11.02 | 9.69 |
| 320-750 | 1590D | 7.4" x 4.75" x 2.2" | 17.85 | 15.81 |
| 320-752 | 1590E | 7.4" x 4.75" x 3.2" | 20.30 | 17.54 |
| 320-754 | 1590F | 7.4" x 7.4" x 2.65" | 26.01 | 23.41 |

Heat Sink Boxes

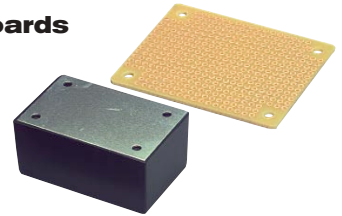
These all-purpose heat sink boxes are perfect for many electronic applications, PC mounts, DI boxes, etc. Aluminum construction with black finish. Optional endplates available, listed below. Sold individually.



| Part # | Mfg. # | Description | Price (1-9) | Price (10-UP) |
|---------|-----------|------------------------------------|-------------|---------------|
| 262-070 | R1196/100 | 2U - 3.54" x 2.0" x 4" L (100 mm) | \$8.95 | \$7.98 |
| 262-072 | R1196/200 | 2U - 3.54" x 2.0" x 8" L (200 mm) | 17.62 | 15.94 |
| 262-074 | R1197/100 | 3U - 4.13" x 2.36" x 4" L (100 mm) | 10.97 | 9.88 |
| 262-076 | R1197/200 | 3U - 4.13" x 2.36" x 8" L (200 mm) | 21.66 | 19.58 |
| 262-078 | R1198 | Optional endplate for R1196 boxes | 2.03 | 1.79 |
| 262-079 | R1199 | Optional endplate for R1197 boxes | 2.14 | 1.91 |

Project Boxes PC Boards

Inside these black plastic project boxes you will find standoffs to mount perforated boards (sold separately). Each box includes an aluminum lid and six brass screws. The perforated boards feature 0.032" perforations for electronic components.



| Part # | Description | Dimensions (L x W x H) | Price (1-9) | Price (10-UP) |
|---------|------------------------------------|-------------------------------|-------------|---------------|
| 320-400 | Project Box (A) | 2-11/16" x 1-11/16" x 1-3/16" | \$2.10 | \$1.75 |
| 320-410 | Project Box (B) | 3-1/4" x 2" x 1-3/8" | 2.40 | 1.95 |
| 320-420 | Project Box (C) | 4-1/8" x 2-11/16" x 1-9/16" | 2.95 | 2.45 |
| 320-430 | Project Box (D) | 5-1/4" x 3-1/4" x 1-9/16" | 3.75 | 3.10 |
| 320-440 | Perforated Board for Project Box A | | .45 | .38 |
| 320-450 | Perforated Board for Project Box B | | .55 | .48 |
| 320-460 | Perforated Board for Project Box C | | .80 | .70 |
| 320-470 | Perforated Board for Project Box D | | 1.20 | 1.05 |

140 Piece Jumper Wire Kit

Jumper wire kit includes 140 pieces of pre-stripped, 22 gauge solid core wire in various colors. Contains 14 different lengths of 10 pieces each. Includes plastic case. Dimensions: 6-1/2" x 2-1/2" x 5/8".



#321-082 \$8.50 (1-5) \$7.90 (6-UP)

350 Piece Jumper Wire Kit

This deluxe jumper wire kit includes 350 pieces of pre-stripped, 22 gauge solid core wire in various colors. 14 different lengths of 25 pieces each. Includes handy plastic case. Dimensions: 8-1/4" x 4-1/4" x 1-1/4".



#321-080 \$11.75 (1-5) \$10.98 (6-UP)

830 Test Point Breadboard

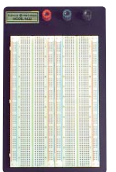
This top quality breadboard contains 830 test points, with 126 separate 5 point terminals, plus 8 horizontal bus lines of 25 common test points each. Will accommodate up to (11) 14 pin DIP ICs, or (8) 16 pin DIP ICs. Includes three color coded binding posts (black, red, and green). Base material is heavy black anodized aluminum. Dimensions: 7-1/4" x 3-3/4".



#321-090 \$13.89 (1-5) \$12.50 (6-UP)

1660 Test Point Breadboard

High quality breadboard utilizes a heavy black anodized base with three color coded binding posts (black, red, and green). Contains 1,660 test points, with 252 separate 5 point terminals, plus 16 horizontal bus lines of 25 common test points each. Will accommodate up to (18) 14 pin DIP ICs, or (15) 16 pin DIP ICs. Dimensions: 5-1/4" x 8-1/2".



#321-092 \$23.89 (1-5) \$21.50 (6-UP)

2390 Test Point Breadboard

This high quality breadboard features 2,390 test points with 378 separate 5 point terminals, plus 20 horizontal bus lines of 25 common test points each. Will accommodate up to (33) 14 pin DIP ICs, or (30) 16 pin ICs. Includes four color coded binding posts (black, red, yellow, and green). Dimensions: 7" x 9".



#321-094 \$31.95 (1-5) \$28.75 (6-UP)

3220 Test Point Breadboard

This professional quality breadboard is mounted on a heavy black anodized base with four color coded binding posts (black, red, yellow, and green). Provides 3,220 test points with 504 separate 5 point terminals, plus 14 horizontal bus lines of 25 test points each. Will accommodate up to (36) 14 pin DIP ICs. Dimensions: 8-1/4" x 9-1/2".



#321-096 \$41.87 (1-5) \$37.78 (6-UP)