

# Speaker Building

## Cabinets & Cabinet Covering

### Dayton Loudspeaker Speaker Cabinets

- Available in traditional and new curved sided designs
- Choose from three finishes: black laquer, cherry, and new maple
- New magnetic grill fasteners



If you have ever wanted to create a loudspeaker without investing the time and money building from scratch, these cabinets are the answer. Now available in two styles, traditional and new curved sided, and three finishes to complement any décor. Constructed out of MDF with real wood veneers, the quality of these cabinets is outstanding. Each cabinet is constructed of 3/4" MDF with a "shelf" brace running vertically up the sides and across the top and bottom. The baffle is 1" MDF with a black satin finish and rabbeted construction. The rear of the cabinet features two 1/4" holes allowing the installation of our knock-in binding posts. The overall cabinet is extremely rigid and solid, with minimal panel resonance.

The entire cabinet (including the rear) is covered in premium veneers with a butter-smooth finish.

The gloss black cabinets feature a piano-quality finish that is extremely glossy and reflective. The Cherry finish is very rich with a relatively strong, wide grain and a semi-gloss finish, making them very elegant. The Maple cabinets feature a very light-colored, tight-grained wood veneer with a semi-gloss finish, making them fit into any contemporary décor. It is important to note that these cabinets use real wood veneers, so some variations in grain and color will naturally occur between cabinets.

One of the most innovative features is the exclusive **Baffle Replacement** and **EXchange (B-REX)** system, which allows the front baffle to be easily removed for prototyping and construction. Blank baffles and grills are available separately. As you can see, the versatility offered by the **B-REX** system is unmatched by any other pre-finished cabinet! These finished cabinets come complete with baffle, hardware, and grills.

### Rectangular Cabinets

*Sold in pairs*

Part #	Model #	Description	Dimensions H x W x D	Price Pair
302-700	TW-0.25BK	.25 ft <sup>3</sup> Black	12" x 7.5" x 10"	\$111.88
302-702	TW-0.25CH	.25 ft <sup>3</sup> Cherry	12" x 7.5" x 10"	111.88
302-706	TW-0.25MA	.25 ft <sup>3</sup> Maple	12" x 7.5" x 10"	111.88

*Sold individually*

Part #	Model #	Description	Dimensions H x W x D	Price Each
302-710	TW-0.38BK	.38 ft <sup>3</sup> Black	14" x 8" x 10.5"	\$64.77
302-712	TW-0.38CH	.38 ft <sup>3</sup> Cherry	14" x 8" x 10.5"	64.77
302-716	TW-0.38MA	.38 ft <sup>3</sup> Maple	14" x 8" x 10.5"	64.77
302-720	TW-0.50BK	.5 ft <sup>3</sup> Black	14" x 8.5" x 12.5"	74.87
302-722	TW-0.50CH	.5 ft <sup>3</sup> Cherry	14" x 8.5" x 12.5"	74.87
302-726	TW-0.50MA	.5 ft <sup>3</sup> Maple	14" x 8.5" x 12.5"	74.87
302-730	TW-0.75BK	.75 ft <sup>3</sup> Black	17" x 10" x 12.5"	98.88
302-732	TW-0.75CH	.75 ft <sup>3</sup> Cherry	17" x 10" x 12.5"	98.88
302-736	TW-0.75MA	.75 ft <sup>3</sup> Maple	17" x 10" x 12.5"	98.88
302-740	MTM-0.75BK	.75 ft <sup>3</sup> Black	20" x 8" x 13"	104.23
302-742	MTM-0.75CH	.75 ft <sup>3</sup> Cherry	20" x 8" x 13"	104.23
302-746	MTM-0.75MA	.75 ft <sup>3</sup> Maple	20" x 8" x 13"	104.23
302-750	MTM-1.0BK	1.0 ft <sup>3</sup> Black	22" x 9" x 13.5"	109.77
302-752	MTM-1.0CH	1.0 ft <sup>3</sup> Cherry	22" x 9" x 13.5"	109.77
302-756	MTM-1.0MA	1.0 ft <sup>3</sup> Maple	22" x 9" x 13.5"	109.77

### Blank Replacement Baffles (New Magnetic Type)

Part #	Model #	Description	Price Pair
302-709	MB25	Blank baffle for .25 ft <sup>3</sup> cabinets	\$8.86
302-719	MB38	Blank baffle for .38 ft <sup>3</sup> cabinets	10.66
302-729	MB50	Blank baffle for .50 ft <sup>3</sup> cabinets	10.66
302-739	MB75	Blank baffle for .75 ft <sup>3</sup> cabinets	14.68
302-749	MB75MTM	Blank baffle for .75 ft <sup>3</sup> MTM cabinets	14.68
302-759	MB10MTM	Blank baffle for 1.0 ft <sup>3</sup> MTM cabinets	16.25

### Curved Sided Cabinets

*Sold in pairs*



Part #	Model #	Description	Dimensions H x W (Front/Back) x D	Price Pair
302-701	TWC-0.25BK	.25 ft <sup>3</sup> Black	12" x (7.5", 4.5") x 10.5"	\$135.85
302-703	TWC-0.25CH	.25 ft <sup>3</sup> Cherry	12" x (7.5", 4.5") x 10.5"	135.85
302-707	TWC-0.25MA	.25 ft <sup>3</sup> Maple	12" x (7.5", 4.5") x 10.5"	135.85

*Sold individually*

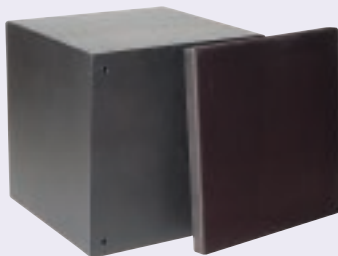
Part #	Model #	Description	Dimensions H x W (Front/Back) x D	Price Each
302-711	TWC-0.25BK	.38 ft <sup>3</sup> Black	14" x 8" x 11.3"	\$85.63
302-713	TWC-0.25CH	.38 ft <sup>3</sup> Cherry	14" x 8" x 11.3"	85.63
302-717	TWC-0.25MA	.38 ft <sup>3</sup> Maple	14" x 8" x 11.3"	85.63
302-721	TWC-0.50BK	.5 ft <sup>3</sup> Black	14" x 8.5" x 12.5"	93.65
302-723	TWC-0.50CH	.5 ft <sup>3</sup> Cherry	14" x 8.5" x 12.5"	93.65
302-727	TWC-0.50 MA	.5 ft <sup>3</sup> Maple	14" x 8.5" x 12.5"	93.65
302-731	TWC-0.75BK	.75 ft <sup>3</sup> Black	17" x 10" x 12.5"	119.87
302-733	TWC-0.75CH	.75 ft <sup>3</sup> Cherry	17" x 10" x 12.5"	119.87
302-737	TWC-0.75MA	.75 ft <sup>3</sup> Maple	17" x 10" x 12.5"	119.87
302-741	MTMC-0.75BK	.75 ft <sup>3</sup> Black	20" x 8" x 13"	124.91
302-743	MTMC-0.75CH	.75 ft <sup>3</sup> Cherry	20" x 8" x 13"	124.91
302-747	MTMC-0.75MA	.75 ft <sup>3</sup> Maple	20" x 8" x 13"	124.91
302-751	MTMC-1.0BK	1.0 ft <sup>3</sup> Black	22" x 9" x 13.5"	129.77
302-753	MTMC-1.0CH	1.0 ft <sup>3</sup> Cherry	22" x 9" x 13.5"	129.77
302-757	MTMC-1.0MA	1.0 ft <sup>3</sup> Maple	22" x 9" x 13.5"	129.77

### Replacement Grills (New Magnetic Type)

Part #	Model #	Description	Price Pair
302-708	MG25	Grill for .25 ft <sup>3</sup> Cabinets	\$9.17
302-718	MG38	Grill for .38 ft <sup>3</sup> Cabinets	9.97
302-728	MG50	Grill for .50 ft <sup>3</sup> Cabinets	10.74
302-738	MG75	Grill for .75 ft <sup>3</sup> Cabinets	13.94
302-748	MG75MTM	Grill for .75 ft <sup>3</sup> MTM Cabinets	12.69
302-758	MG10MTM	Grill for 1.0 ft <sup>3</sup> MTM Cabinets	15.14

### Finished Subwoofer Cabinets

Dayton Loudspeaker has just made it easier for you to build that awesome subwoofer you've always wanted! Perfect for the builder who does not have the time, equipment or patience to build his or her own subwoofer system from scratch. The cabinets utilize 3/4" MDF (the speaker cabinet material of choice), are precision CNC cut, and then assembled with polyurethane glue



for superior strength. Strong edge joints and internal brace are important for achieving strength and minimal panel resonance. The enclosure is meticulously sanded and primed, then painted with three coats of textured matte black enamel to create a durable long lasting finish. All edges have a 1/4" roundover and a 1" grill wrapped in black cloth to finish off the aesthetically pleasing design. Available with or without cutouts for amplifier and woofer.

*Without cutouts (you will need to cut your own holes per your design):*

Part #	Model #	Net Volume Cu. Ft.	External Dimensions (H x W x D)	Price Each
302-800	SWC-1	1.0	14" x 14" x 14-1/4"	\$119.88
302-810	SWC-2	2.0	17" x 17" x 17-1/4"	155.80
302-820	SWC-3	3.0	19-1/8" x 19-1/8" x 19-3/8"	186.77

*With cutouts (for designated woofer and sub amp):*

Part #	Model #	Description	Price Each
302-802	SWC-1CO	SWC-1 cutout for 10" woofer and SA240 amp	\$119.88
302-812	SWC-2CO	SWC-2 cutout for 12" woofer and HPSA500/1000 amp	155.80
302-822	SWC-3CO	SWC-3 cutout for 15" woofer and HPSA500/1000 amp	186.77