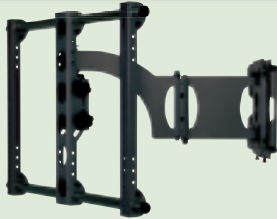


Sanus VMAA18 30"-50" LCD/Plasma Full Motion-Mounts

- Fits most flat panel TVs up to 50"
- Supports up to 130 lbs.
- Durable anodized finish

The VMAA18 is a full motion wall mount designed for large LCD and plasma TVs. Virtual Axis™ tilting system provides tilt (+5° to -15°), swivel (±90°), pan, and extend from 3-1/4" to 19-3/4", all with the touch of a finger. Extruded aluminum and solid heavy-gauge steel construction offer a sleek, high-tech look while providing strength and durability. Universal mounting pattern fits virtually any 30"-50" LCD or plasma TV up to 130 lbs. Mounting hardware included.

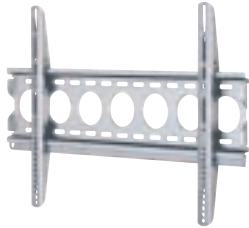


- #185-456 (Silver) \$399.99 LIST **\$379.99** EACH
- #185-458 (Black) \$399.99 LIST **\$379.99** EACH

Sanus VMPL250 30"-50" Fixed LCD/Plasma Mounts

- Fits most LCD flat panel TVs
- TV/monitor mounted is 1-1/4" from wall
- Supports up to 130 lbs.
- Durable powder-coat finish

Low-profile LCD/plasma TV wall mount constructed out of solid heavy-gauge steel with a powder-coated finish. A low-profile design positions the TV only 1-1/4" from the wall. The VMPL250 accommodates most 30" ~ 50" flat panel LCD and plasma TVs weighing up to 130 lbs. Dimensions: 29" W x 1-1/4" D x 18-1/2" H.



- #185-408 (Silver) \$119.99 LIST **\$99.99** EACH
- #185-410 (Black) \$119.99 LIST **\$99.99** EACH

Sanus VM1 13"-30" Tilt and Swivel LCD/Plasma Mounts

- Fits most flat panel TVs and computer monitors
- Supports up to 50 lbs.
- TV/monitor is mounted 3" from wall
- Durable anodized finish



VM1 flat panel LCD TV wall mounts feature Sanus Systems' exclusive SmoothLock™ mechanism that provides smooth tilt and swivel motion, effortless tightening and extreme rigidity. The mount tilts 30° and swivels 30°. Constructed from extruded aluminum with an anodized finish. VESA 75/100 mounting standards ensures compatibility with most flat-panel TVs up to 30" and weighing 50 lbs. Dimensions: 5" W x 3" D x 6" H.

- #185-436 (Silver) \$79.99 LIST **\$69.99** EACH
- #185-438 (Black) \$79.99 LIST **\$69.99** EACH

Sanus VMAV A/V Component Wall Mounts

- Supports up to 45 lbs.
- Cushioned mounting arms protect and stabilize equipment

Sleek and stylish, the VisionMount VMAV is a unique mounting system for AV components up to 45 lbs. Dimensions: 9" H x 14-1/2" W x 17-1/4" D.



- #185-530 (Silver) \$39.99 LIST **\$34.99** EACH
- #185-532 (Black) \$39.99 LIST **\$34.99** EACH

Sanus VMCT Cable Tunnels

- Creates a clean, organized appearance
- Can be used under flat panel TVs or between wall mounts

Add the last touch to an installation with VMCTs. Sanus' cable tunnels are designed to hide and protect cables and wires for a clean, organized appearance. Dimensions: 6" H x 3-1/4" W x 1-1/4" D.



- #185-534 (Silver) \$14.99 LIST **\$12.99** EACH
- #185-536 (Black) \$14.99 LIST **\$12.99** EACH

Sanus SC1A LCD 13"-26" Ceiling VESA Mounts

- VESA 75 and 100 mounting plate
- Wire management channel conceals connections
- SmoothLock allows for easy tilt and swivel adjustments

When corner placement or wall mounting is not possible, choose the VisionMount SC1A tilt and swivel ceiling mount for small flat-panel TVs. SmoothLock™ mechanism enables smooth, effortless tilting motion with the touch of a finger. Adjustable height allows for perfect TV positioning and a wire management channel to keep cables concealed and organized. VESA 75 and 100 mounting patterns fit virtually any flat-panel TV up to 50 lbs.



Specifications: • TV size: 13"-26" • Tilt range: ±15° • Swivel range: ±50° • Max supported weight: 50 lbs. • Mounting pattern: VESA 75 and 100 • Dimensions: 15-1/4" H x 5-1/4" W x 5-1/2" D.

- #185-488 (Silver) \$109.99 LIST **\$99.99** EACH
- #185-490 (Black) \$109.99 LIST **\$99.99** EACH

Sanus LCD 12"-24" Desk Mounts

- Desktop VESA LCD mounts for up to 24" monitors
- Wire management channel conceals connections
- SmoothLock™ adjustment mechanisms
- VESA 75 and 100 mounting patterns
- Adjustable height

These innovative mounts can be attached to the back edge or mounted inside the cable opening of desks up to 3" thick without the use of tools.

SD103: • Monitor size: 13"-24" • Tilt range: ±15° • Swivel range: +28°-75° • Max supported weight: 20 lbs. • Mounting plate: VESA 75 and 100 • Dimensions: 17" H x 4-1/2" W x 5-1/2" D.

SD115: • Monitor size: 13"-24" • Tilt range: ±15° • Swivel range: ±90° • Pan range: ±90° • Max supported weight: 20 lbs • Dimensions: 19-1/4" H x 8-3/4" W x 5-3/8" D.



Part #	Mfg #	Description	Color	List Price	Price Each
185-476	SD103-S1	2-axis desk mount	Silver	\$99.99	\$89.99
185-478	SD103-B1	2-axis desk mount	Black	99.99	89.99
185-472	SD115-S1	3-axis articulating desk mount	Silver	139.99	129.99
185-474	SD115-B1	3-axis articulating desk mount	Black	139.99	129.99

Sanus VMCM1B LCD/Plasma 30"-50" Ceiling Mount

- Universal mounting pattern
- Allows for unlimited TV placement
- Solid heavy-gauge steel construction
- Virtual Axis provides easy tilt, swivel, and roll adjustments

Sanus VisionMount VMCM18 is a tilt and swivel ceiling mount for large LCD and plasma TVs. This mount is a great choice for corner placement or when wall mounting is not possible. Solid heavy-gauge steel construction offers a sleek, high-tech look while providing strength and durability. Sanus Systems' Virtual Axis™ tilting system provides easy adjustment of viewing angle with just the gentle touch of a finger. Mount can be rotated ±6° after installation to ensure TV is perfectly level. Universal mounting pattern fits virtually any 30"-50" inch LCD or plasma TV up to 130 lbs. Satin black finish.



Specifications: • TV size: 30"-50" • Tilt range: +15° -5° • Swivel range: ±90° • Roll range: ±6° • Max supported weight: 130 lbs. • Mounting pattern: Universal • Dimensions: 45-3/4" H x 29-1/2" W x 5" D.

- #185-486 \$369.99 LIST **\$349.99** EACH

Sanus VMUC1S LCD 9"-17" Under Cabinet Mount

- Perfect for kitchen LCD installations
- Solid heavy-gauge steel offers strength and reliability
- Swivel and tilt adjustments for viewing from any angle

Specifications: • TV size: 9"-17" • Tilt range: +10° -90° • Swivel range: ±55° • Max supported weight: 15 lbs. • Mounting pattern: 100 mm x 100 mm • Dimensions: 1-3/4" H x 5-1/2" W x 9-1/2" D.



- #185-492 \$109.99 LIST **\$99.99** EACH